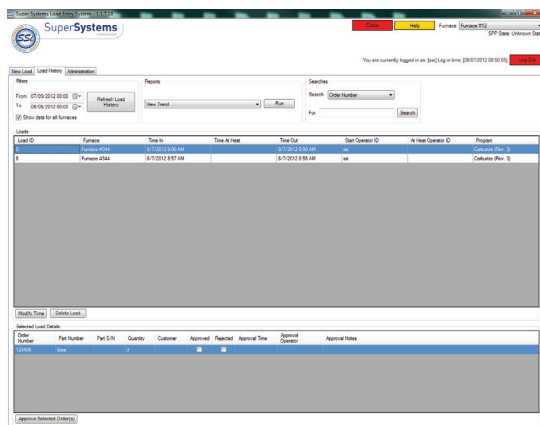


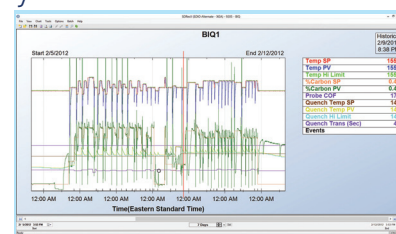


SuperDATA Data Acquisition

Features & Functions



- Load and Parts traceability
- Recipe accountability
- Password protected
- Scannable data entry
- Utilization reports
- Option to run loads manually
- Supports both programmable and non recipe-based Instruments
- Helps prevent operator error
- Recipe database - access to all controllers
- Reinforces process completion for better quality
- Automatic recipe start and stop
- Load reports with graphical and tabular data
- Part images database for display when creating loads
- Associate additional documents with Load History (Metlab results, spreadsheets, photos, etc.)



Standard Reports

- Load report with trend chart
- Load report with tabular data
- Furnace Utilization Report
- Production report: all furnaces
- Production report: current furnace
- Time to heat with trend chart
- Time to heat with tabular data



Recipe Management

- Create process groups based on process performed
- Create individual recipes and assign them to a process

Compact Load Entry

- Runs on an SSi 9000 Series touch screen
- Provides load control at the touch screen
- Works in conjunction with Standard Load Entry
- Allows for load charging, recipe previewing, and bar code scanning

Parts and Equipment

- Stores part name/number and weight
- Parts assigned to specific process groups and recipes
- Links equipment to appropriate process groups

