

DPL4000

Portable low range dew point system for accurate and reliable verification of gases using current sensor technology.

LOW RANGE DEW POINT MEASUREMENT

- Determine very low dew points with high accuracy
- Excellent long term stability
- Rapid response time with fast stabilizing dew point reading
- Withstands condensation
- Includes hand held instrument, sensor, sensor housing, flow meter, quick connect fittings, logging software, and protective carrying case



TECHNICAL FEATURES

Optimal dew point range

- 112 to -22 °F with +/- 3.6 °F accuracy
- 80 to -30 °C with +/- 2 °C accuracy

Operating temperature

- 40 to +140 °F
- 40 to +60 °C

Pressure range: 0 to 725 psi

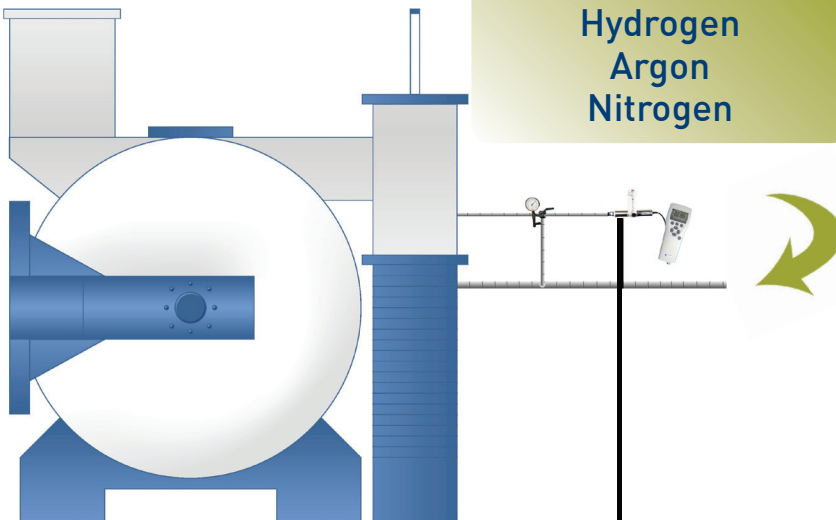
Alarm indication

Sensor threads: 1/2" NPT

Sensor housing: IP65 – NEMA4 (AISI316L)

Typical DP Gas Measurements

Hydrogen
Argon
Nitrogen



OTHER FEATURES

Durable handheld

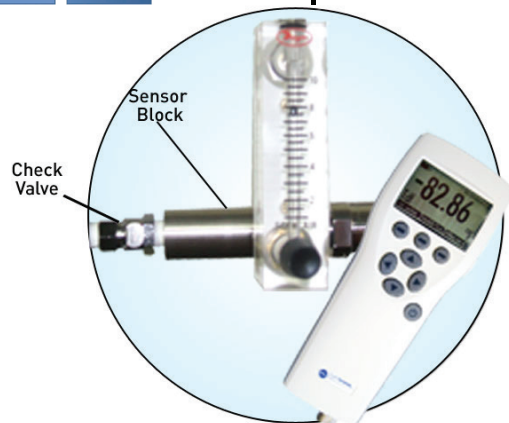
- Easy to read LCD display
 - Units: Dew point (°F or °C), Frost point, ppm (by weight), ppb (by volume)
- Process variable trending and data logging
- Battery powered
 - Rechargeable battery included
 - Battery run time: 12 hours

Sensor Quick Disconnect

- Includes two male quick disconnect fittings

USB Cable and Utility Software

- Quickly retrieve data from handheld device



INNOVATIVE SOLUTIONS WORLDWIDE



Super **Systems**
incorporated

Special Features



Quick Response

Easy to Use

Sensor Purge

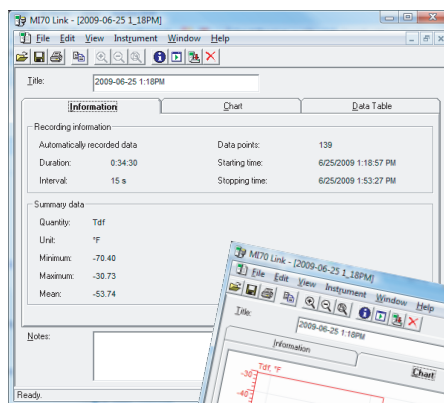
This function evaporates all excess moisture molecules from the sensor to significantly increase the response time when the sensor goes from an ambient condition to a dry condition. A Sensor Purge will be initiated automatically when the sensor detects a large wet-to-dry environmental change or upon startup and after every 24 hours of continuous use.

Specifications

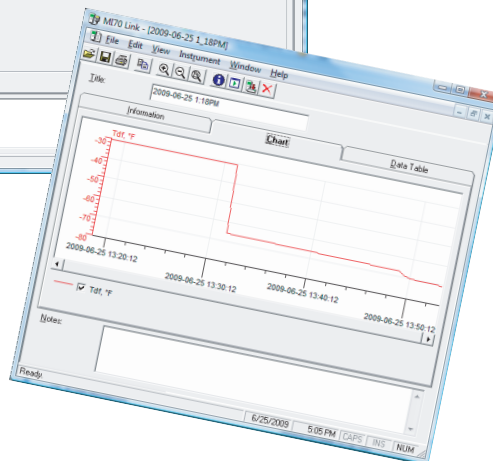
This device is used to measure very low dew points with high accuracy and excellent long term stability. It can be used across a wide range of temperatures and pressures. It measures dew point in a variety of non-corrosive gases including Nitrogen, Argon, and Hydrogen.



- Total Measurement Range:** -148°F to +68°F (-100°C to +20°C)
- Optimal Measurement Range:** -112°F to -22°F (-80°C to -30°C)
- Accuracy (Within Optimal Range):** +/- 3.6°F (+/- 2°C)
- Accuracy (Outside Optimal Range):** +/- 5.4°F (+/- 3°C)
- Operating Temperature Range:** -40°F to +140°F (-40°C to +60°C)
- Operating Pressure Range:** 0-725 psi / 0-50 bar
- Sensor Housing:** IP65 - NEMA4 (AISI316L)
- Power:** Rechargeable Battery (included) or 4 "AA" Batteries
- Battery Recharging Time:** Approximately 4 hours
- Run Time on Battery Power:** Approximately 12 hours (depends on application)
- Output Units:** Dew Point /Frost Point, ppm (by weight), ppb (by volume)



Utility Software



SuperSystems
incorporated

7205 Edington Drive
Cincinnati, OH 45249
513.772.0060 **phone**
513.772.9466 **fax**

www.supersystems.com 800.666.4330