

# HB1000 Series

## In-Furnace Data Logging Device



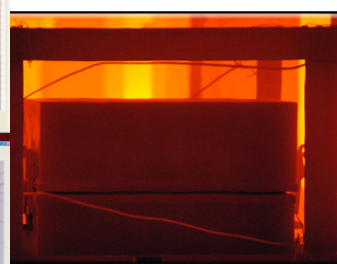
The HB1012 and HB1015 provide data gathering capabilities in a unit designed for in-furnace data recording combined with an easy-to-use report writer for simple TUS reporting. By eliminating the requirement for long extensions of thermocouple wire, the HB1000 series data logger moves continuously through the furnace monitoring 10 type-K input channels. The HB1000 can run uninterrupted for extended periods of time in the furnace at high temperatures and is designed to work in harsh heat treating environments.



Accuracy:	$\pm 0.9^{\circ}\text{F}$ ( $\pm 0.5^{\circ}\text{C}$ )
Resolution:	$0.2^{\circ}\text{F}$ ( $0.1^{\circ}\text{C}$ )
Number of Channels:	10
Trigger Channel:	CH 1
Sample Interval:	1 Second
Recording Start/Stop Temp:	Set Via USB port
Memory Type:	Non-Volatile Data Flash
Data Points:	786,432 (memory fully loaded) 196,608 (one memory chip loaded)
Battery Type:	Lithium Polymer
Max Battery Life:	40 Hours Between Charges
Battery Charging:	Via USB Port (or external supply)
Communications:	Via USB Port
Data Logger Reset:	Via USB Port

## HB1000 Benefits

- Operating temperature up to  $1832^{\circ}\text{F}$  ( $1000^{\circ}\text{C}$ )
- Stainless steel exterior
- Wear strips protect the thermocouple exits
- 10 thermocouple channels
- Sampling intervals 1 second
- USB Communication port for fast and convenient data downloads



INNOVATIVE SOLUTIONS WORLDWIDE



Super**Systems**  
incorporated

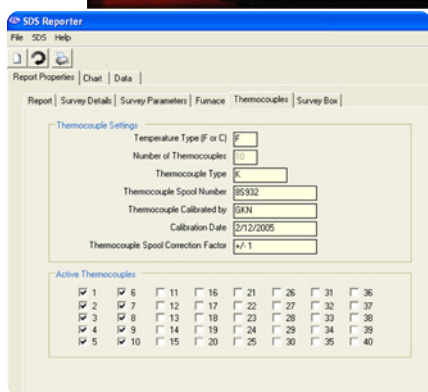
# HB 1000



SSi Product Name	HB1012		HB1015	
Weight - lbs/kg (Approx)	<b>US</b> 33.55	<b>Metric</b> 15.22	<b>US</b> 60.10	<b>Metric</b> 27.26
Height - Inches/Millimeter:	7.16	182.0	11.18	284.0
Width - Inches/Millimeter:	11.22	285.0	14.17	360.1
Length - Inches/Millimeter:	17.52	445.0	18.50	470.0
Temperature in		Time at Temp	Time at Temp	
°F	°C			
482	250	7hrs 30min	13hrs	
572	300	5hrs 45min	10hrs 30min	
662	350	4hrs 45min	8hrs 35min	
752	400	4hrs	7hrs 25min	
842	450	3hrs 30min	6hrs 30min	
932	500	3hrs	5hrs 35min	
1022	550	2hrs 50min	5hrs	
1112	600	2hrs 30 min	4hrs 40min	
1202	650	2hrs 15min	4hrs 15min	
1292	700	2hrs 10min	4hrs	
1382	750	2hrs	3hrs 45min	
1472	800	1hr 50min	3hrs 30min	
1562	850	1hr 45 min	3hrs 15min	
1652	900	1hr 45min	3hrs	
1742	950	1hr 30min	3hrs	
1832	1000	1hr 30min	2hrs 50min	

## AMS 2750 E Compliant

The SDS Reporter software features several ways to simplify the report writing process. Documents can be customized by the operator using the Report Manager. The Template Manager allows survey-specific data to be created, updated, and available during reporting. All reports can be printed, saved electronically, and e-mailed using the software utilities.



**SuperSystems**  
incorporated

7205 Edington Drive  
Cincinnati, OH 45249  
513.772.0060 **phone**  
513.772.9466 **fax**

[www.supersystems.com](http://www.supersystems.com) 800.666.4330