

MGA6010

PRECISION MEASUREMENT OF PROTECTIVE HEAT TREATING ATMOSPHERE

Continuous NDIR Gas Analyzer

- Integrated automatic calibration
- 4-20mA output for each gas
- Two user-assignable alarm outputs with visible alarm indication
- Custom configurable calculations and gas ratios available
- Digital inputs for:
 - Pump Start/Stop
 - Inhibit COF/PF adjustment
 - Initiate Zero calibration
 - Initiate Span calibration
- IR %C Calculation and indication of probe %C
- Two Ethernet ports [one direct to screen, another direct to sensor]
- Capable of Probe Plus IR for automatic adjustment of COF/PF
- Automatic sampling parameters prevent damage to instrument
- Color touch screen
- Multi-language support

Included software for data management:

- Data manager for downloading
- Print charts and tabular data
- Setup facility and furnace identifiers
- Add notes when capturing data
- Real time graphical display on PC
- Export utilities
- Backup data manager



Gas Cells Available:

- **Carbon monoxide (CO)**
Range: 0 - 30%
- **Carbon dioxide (CO₂)**
Range: 0 - 2.00%, 0 - 10%
- **Natural gas (CH₄)**
Range: 0 - 30%
- **Hydrogen (H₂)**
Range: 0 - 100%

Communications :

[2 Ethernet, RS485, [4] 4-20mA]

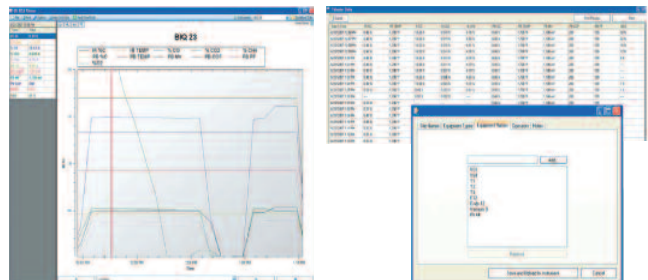
Two USB ports

(1 for communications, 1 for off-line data storage)

Standard pump is 110VAC; 230VAC pump available

Custom ranges available for all gases, consult factory

Exothermic gas ranges available



INNOVATIVE SOLUTIONS WORLDWIDE

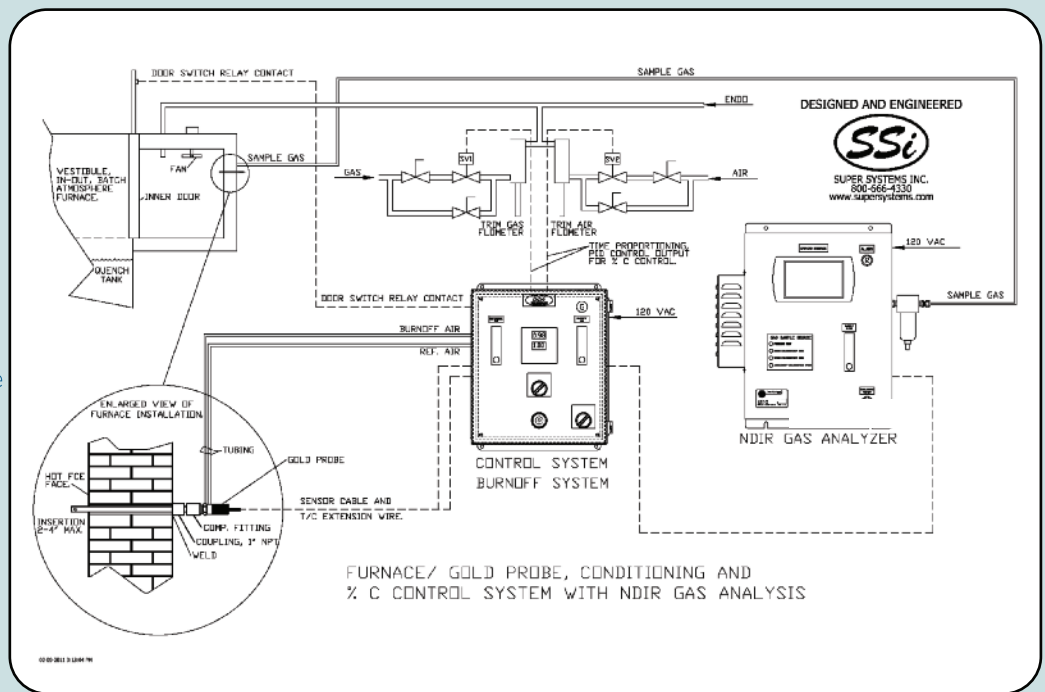


SuperSystems
incorporated

Critical Furnace Control

Probe + IR System

- Automatically adjusts CO Factor (COF)
- COF limits predetermined for % Carbon adjustment
- Millivolt and temperature limits for furnace gas sampling
- Switch from Probe + IR control to monitor mode



MGA6010 Benefits

Heat Treat Furnaces Conventional Endo Gas

- Enhances quality through process repeatability and accuracy
- On-screen trending chart
- Probe + IR control replaces manual adjustment of COF
- 3-gas analyzer shows possible problems (sooting, water leaks, air leaks, radiant tube leaks)
- Stainless steel fittings, optional stainless steel transducers are required for use with non-dissociated Ammonia
- AutoCalibration integrated into the MGA6010
- CarbCALC II is available on touch screen as a reference tool
- Session recording with customizable user names and equipment

Ancillary Items

- Zero gas cylinder Part# 13505
- Span gas cylinder Part# 13504
- Sample tube Part# 20264



SuperSystems
incorporated

7205 Edington Drive
Cincinnati, OH 45249
513.772.0060 **phone**
513.772.9466 **fax**