

SuperData

Super Data Workstation Installation Procedure



Super Systems Inc
7205 Edington Drive
Cincinnati, Ohio 45249
513-772-0060/800-666-4330
Fax: 513-772-9466
www.supersystems.com

Table Of Contents

Table Of Contents	2
Overview.....	3
1. Map the Super Systems computer on the network as Drive "S".....	4
2. Run the installation of the Super Data workstation provided on the CD	6
Special Note for Windows7 64 bit Users:	7
4. Edit the SDIO.ini file and change the reference to all drives from "C" to "S"	8
5. Edit the PM6.ini file and change the reference to all drives from "C" to "S"	8
6. Create a shortcut on the desktop pointing to the Overview screen	9
Create Shortcut Method 1	9
Create Shortcut Method 2	9
7. Create a Data Source	10
Revision History	12

Overview

The Super Data workstation installation procedure will install all of the necessary files onto the workstation. There are seven steps in this process:

1. Map the Super Systems Inc computer on the network as drive "S"
2. Run the installation of the Super Data workstation provided on the CD
3. Copy the SDIO.ini and PM6.ini files to the Windows directory
4. Edit the SDIO.ini file and change the reference to all drives from "C" to "S"
5. Edit the PM6.ini file and change the reference to all drives from "C" to "S"
6. Create a shortcut on the desktop pointing to the Overview screen
7. Create a Data Source

1. Map the Super Systems computer on the network as Drive "S".

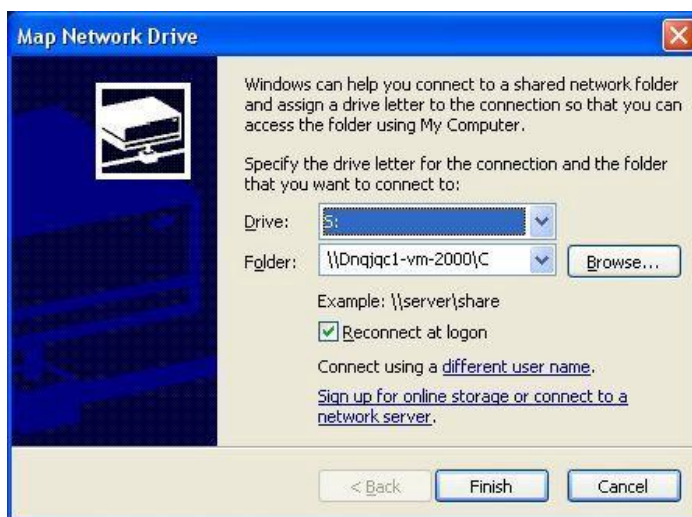
The first step in installing Super Data on the workstation is to map a network drive pointing back to the Super Systems computer.



From the Start Menu, right-click on the "My Computer" menu item and select the "Map Network Drive..." option.

If the "My Computer" menu item is not present, the user can also right-click on the "My Computer" icon on the desktop and select the "Map Network Drive..." option.

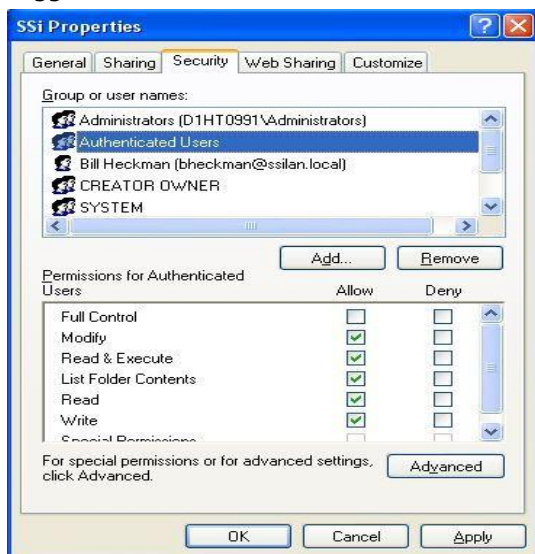
This will display the *Map Network Drive* screen. The drive letter can be selected from the first drop-down list next to "Drive:". If drive "S" is available, select that drive. If drive "S" is not available, there will be a path next to the drive letter, and there will be a network drive icon with that letter in the "My Computer" screen.



It is not necessary to map the drive as "S", however, it is suggested to use drive letter "S", if it is available. If another drive letter must be used, it is suggested that the user start toward the end of the alphabet, which is at the top of the drop-down list, since Windows will normally assign drive letters to any new device (USB flash drive, etc) starting with the next available drive letter from the beginning of the alphabet. Click on the **Browse** button and browse to the Super Systems Inc Super Data server PC and use the root drive that contains the "SSi" folder. *Note: The "SSi" folder is normally stored on the "C" drive of the server PC.* The path will resemble the "Folder:" section above - \\<Computer>\C, where <Computer> is the name of the Super Data server PC.

Click on the **Finish** button.

It is recommended to ensure that any users on the workstation will have full access to the server's "SSi" folder. Navigate to the server's "C" drive and right-click on the "SSi" folder. This will display a sub-menu. Select "Properties". From the *SSi Properties* screen, click on the "Security" tab. Select the "Authenticated Users" item and



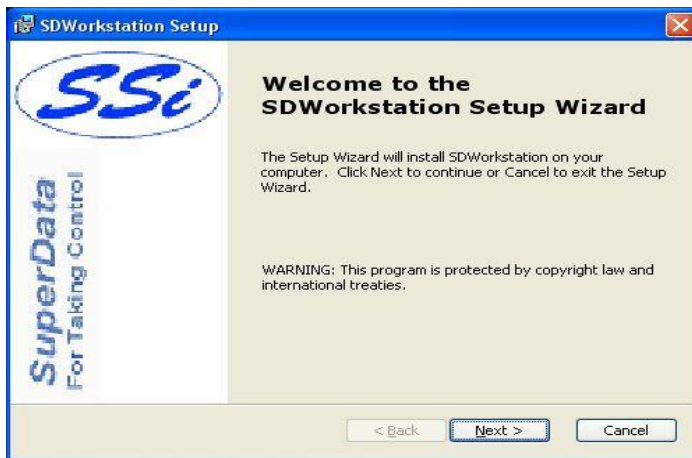
make sure that the permissions listed below include: Modify, Read & Execute, List Folder Contents, Read, and Write. If these options are not selected, select them by checking the box next to each item and click on the **Apply** button when finished.

Step 1 is now complete.

2. Run the installation of the Super Data workstation provided on the CD

Open up the Super Data installation CD that is provided and run the install file for the Super Data workstation, SD_WSSetup.msi.

From the first screen that is displayed, press the **Next >** button to continue with the installation, or press the **Cancel** button to cancel the installation.

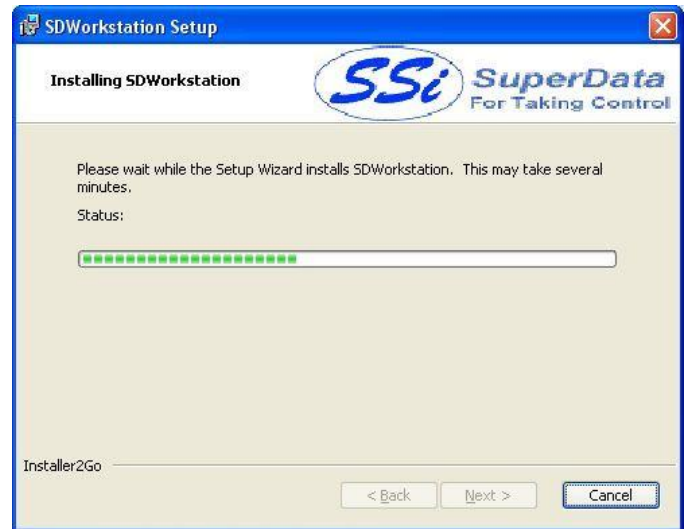


The second screen will allow the user to select the destination location, which should be "C:\SSI\". If this location needs to be changed, press the **Browse** button, which will display a folder selection screen that will allow the user to select a new location for the Super Data workstation. The **Disk Usage** button will display the total size and available size of any local/network drive. This option would only come in handy if there was very little drive space left on the workstation computer. The **< Back** button will take the user back to the previous screen. The **Next >** button will display the next screen. The **Cancel** button will cancel the installation.



The third screen will allow the user to begin the installation. Pressing the **< Back** button will take the user back to the previous screen. Pressing the **Install** button will install the Super Data workstation software. The **Cancel** button will cancel the installation.

The fourth screen will display the progress of the installation. The installation can still be canceled from this screen by pressing the **Cancel** button.



The last screen confirms the installation of the Super Data workstation. Click on the **Finish** button to exit the installation.

Step 2 is now complete.

Special Note for Windows7 64 bit Users:

If your operating system is Windows7 64 bit, you will need to **cut and copy** the following six files from the **Windows\System32** directory to the **Windows\sysWOW64** directory:

SSi.dll
SSiRV.ocx
HWRV.ocx
Cwui.ocx
MMi.dll
MMiRV.ocx

3. Copy SDIO.ini and PM6.ini files to the Windows directory

Open the "Samples" folder in the workstation's installation location. Since "C:\SSI\" is the default install location, the folder would be located in "C:\SSI\Samples\". If the Super Data workstation has been installed to another location, then the location would be "<Install Location>\Samples\", where <Install Location> is the location where the software was installed. There should be three files in the "Samples" folder:

- PM6.ini
- PM2000DB.ini
- SDIO.ini

Copy the "PM6.ini" and the "SDIO.ini" file to the workstation's Windows directory – C:\Windows or C:\WINNT (for older versions of Windows).

Step 3 is now complete.

4. Edit the SDIO.ini file and change the reference to all drives from "C" to "S"

Open the "SDIO.ini" file that was copied into the Windows directory and change all references from drive "C" to drive "S" (or whatever was chosen as the drive letter for the Super Systems Inc computer). Make the following changes to the file:

Original

```
CONFIGPATH=C:\SSI  
COMMPATH=C:\SSI\comdata  
DLOGPATH=C:\SSI\log  
COMPRESSPATH=C:\SSI\clog  
DATABASEPATH=C:\SSI  
RTMPATH=C:\SSI\rtm  
TRENDPATH=C:\SSI\TRENDS
```

New

```
CONFIGPATH=S:\SSI  
COMMPATH=S:\SSI\comdata  
DLOGPATH=S:\SSI\log  
COMPRESSPATH=S:\SSI\clog  
DATABASEPATH=S:\SSI  
RTMPATH=S:\SSI\rtm  
TRENDPATH=S:\SSI\TRENDS
```

Note: Make sure that the file that is being edited is in the Windows directory, and not the "Samples" folder.

Step 4 is now complete.

5. Edit the PM6.ini file and change the reference to all drives from "C" to "S"

Open the "PM6.ini" file that was copied into the Windows directory and change all references from drive "C" to drive "S" (or whatever was chosen as the drive letter for the Super Systems Inc computer). Make the following changes to the file:

Original

```
CONFIGPATH=C:\SSI  
COMMPATH=C:\SSI\comdata  
DLOGPATH=C:\SSI\log  
COMPRESSPATH=C:\SSI\clog  
DATABASEPATH=C:\SSI  
RTMPATH=C:\SSI\rtm  
TRENDPATH=C:\SSI\TRENDS
```

New

```
CONFIGPATH=S:\SSI  
COMMPATH=S:\SSI\comdata  
DLOGPATH=S:\SSI\log  
COMPRESSPATH=S:\SSI\clog  
DATABASEPATH=S:\SSI  
RTMPATH=S:\SSI\rtm  
TRENDPATH=S:\SSI\TRENDS
```

Note: Make sure that the file that is being edited is in the Windows directory, and not the "Samples" folder.

Step 5 is now complete.

6. Create a shortcut on the desktop pointing to the Overview screen

The user will need to create a shortcut to the overview screen on the workstation desktop. The default overview screen is "Overview.rtm". The user will need to verify that this screen is the correct screen.

The "Overview.rtm" file is located on the Super Systems Inc computer's drive –

S:\SSi\RTM\Overview.rtm, where "S:\\" is the drive letter that was assigned to the Super Systems Inc computer in step 1. There are two different ways to create a shortcut on the workstation's desktop.

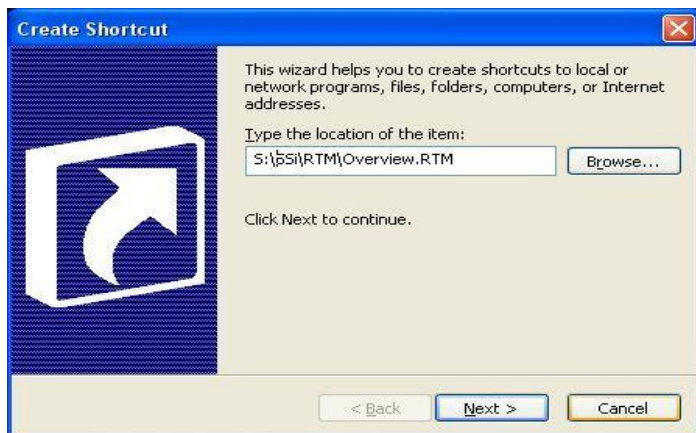
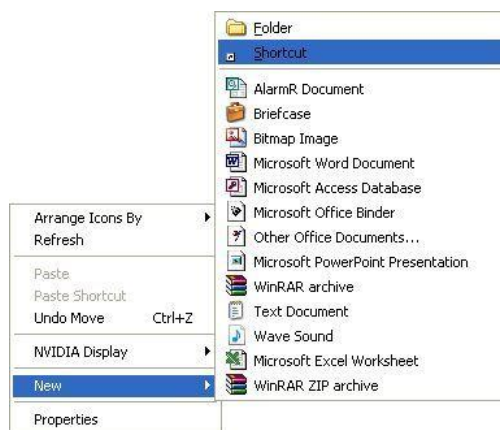
Create Shortcut Method 1

Open the "My Computer" screen and select drive "S", or whatever drive letter was assigned to the Super Systems Inc computer in step 1. Open the selected drive. This will display the Super Systems Inc computer's "C" drive contents. Open the "SSi" folder. Open the "RTM" folder. Select the "Overview.rtm" file and right-click it. This will display a sub menu which will resemble the picture on the left. Select "Create Shortcut". This will create a shortcut to the "Overview.rtm" file in the "S:\SSi\RTM\" folder. The shortcut will be titled "Shortcut to Overview.rtm". Copy this shortcut and paste it onto the workstation's desktop.



Create Shortcut Method 2

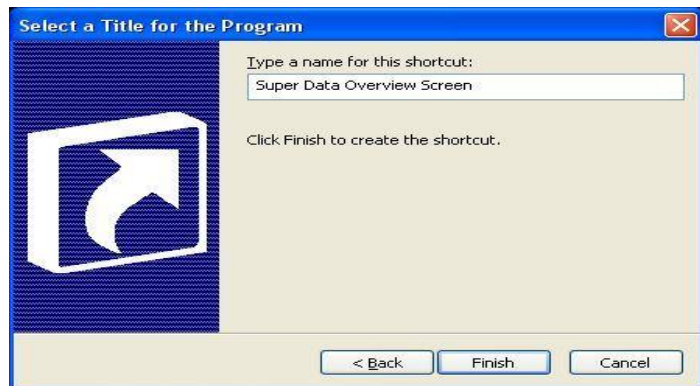
Right-click on the workstation's desktop. This will display a sub menu the will resemble the picture on the right. Hold the mouse over the "New" menu option to display the sub-options. Select "Shortcut". This will start up the wizard to create a shortcut.



The first screen will allow the user to select the file for the shortcut. Click the **Browse...** button and navigate to "S:\SSi\RTM\Overview.rtm" where "S" is the drive letter assigned to the Super Systems Inc computer in step 1, or simply type this path into the text box. Click on the **Next >** button to continue, or click on the **Cancel** button to cancel the shortcut creation.

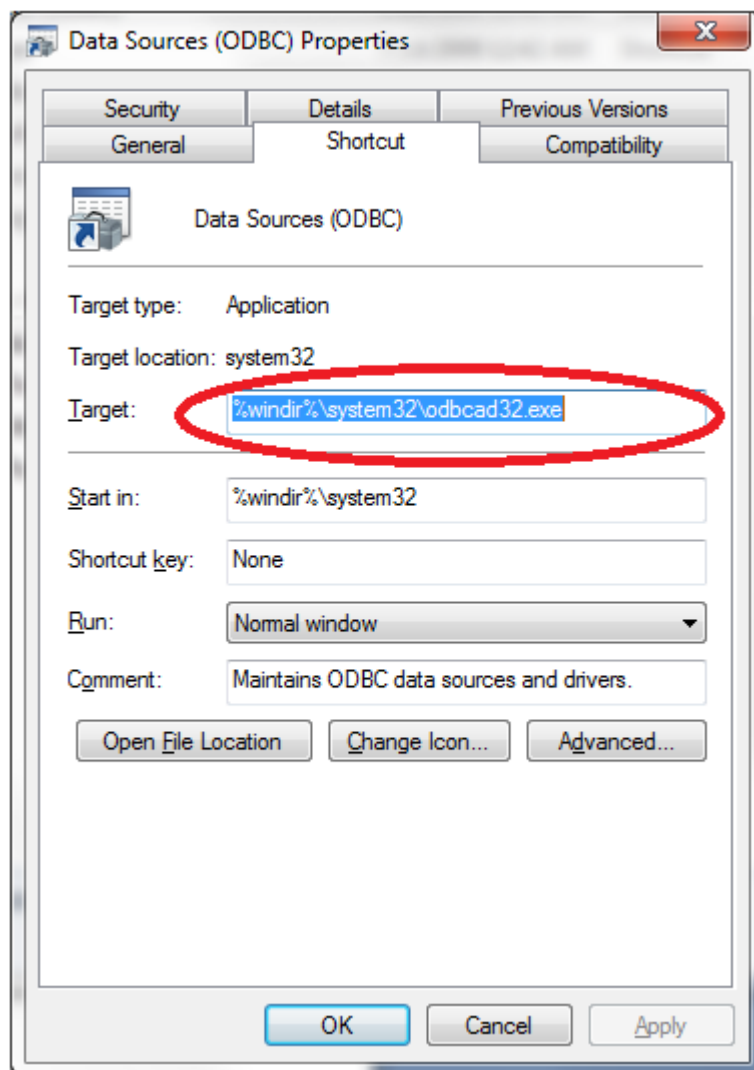
The next screen will allow the user to enter a name for the shortcut. Make sure it is something meaningful, such as "Super Data Overview Screen". Click **< Back** to go back to the previous screen. Click **Finish** to create the shortcut on the workstation's desktop, or click **Cancel** to cancel the shortcut creation.

Step 6 is now complete.



7. Create a Data Source

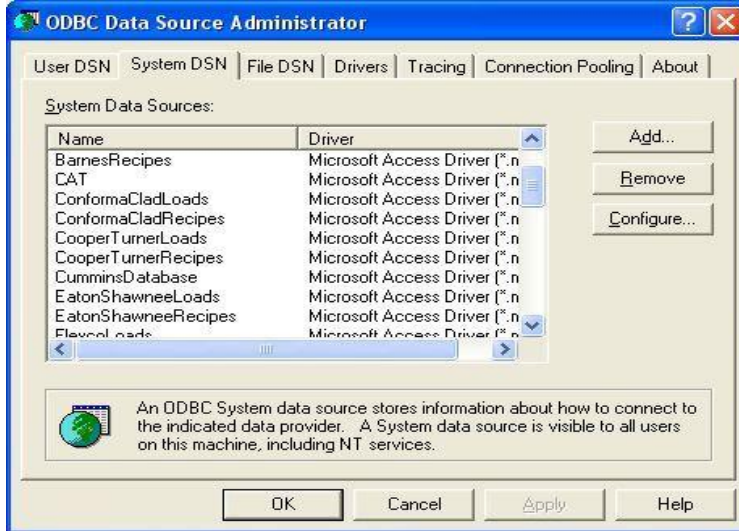
NOTE: Windows 7 64bit only shows the SQL driver when configuring the DSN. To show all the 32 bit drivers please execute the following task.



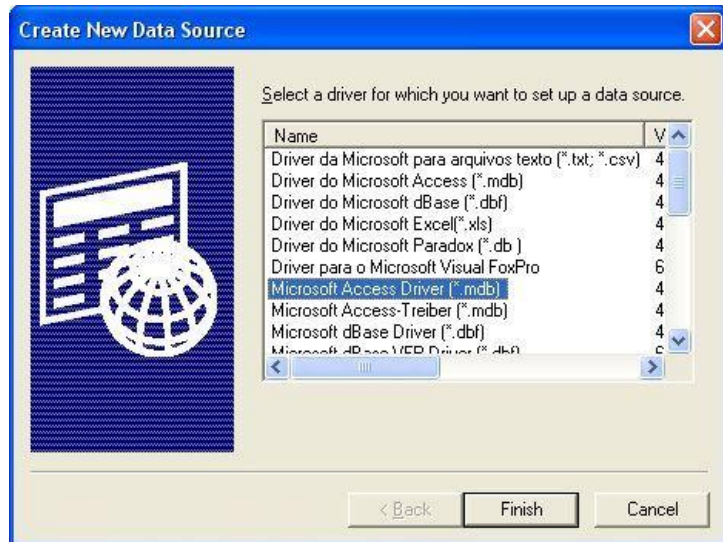
1. Within the Control Panel → Administrative Tools → right click Data Sources (ODBC) and select Properties. The following window appears.

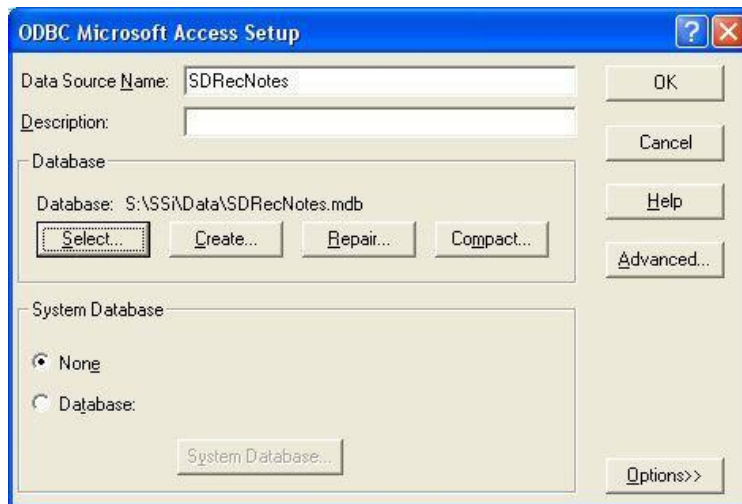
2. In the Target line change the %windir%\system32\odbcad32.exe, to read %windir%\SysWOW64\odbcad32.exe

A data source will need to be created to allow notes to be written to the SD Recorder notes database. From the workstation's Start Menu, click on "Control Panel". There should be an item called "Administrative Tools". Select this item and open it. From the *Administrative Tools* screen, select "Data Sources (ODBC)" and open it. This will display the *ODBC Data Source Administrator* screen. Select the "System DSN" tab. Click on the **Add...** button to add a new data source. This will display the *Create New Data Source* screen, which will allow the user to select the appropriate driver for the database.



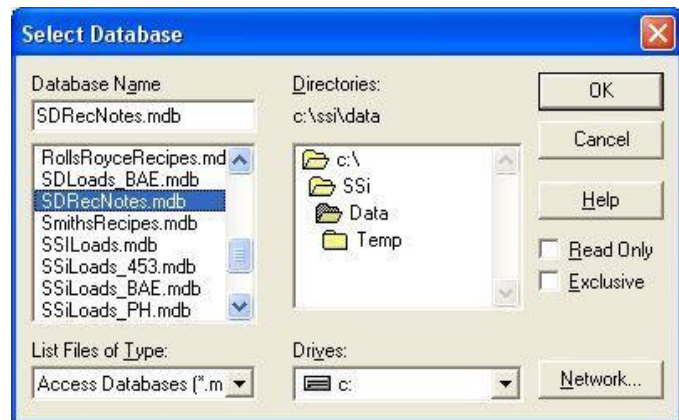
Select "Microsoft Access Driver (*.mdb)" and click the **Finish** button to create the data source. Clicking on the Cancel button will cancel the creation of the data source.





Now, the user will need to set up the data source. Enter the data source name as "SDRecNotes". In the "Database" section, click on the **Select** button to select the notes database.

Select the "S" drive, or whatever drive letter was assigned to the Super Systems Inc computer in step 1, from the "Drives" drop-down list. Double-click on the "SSI" folder to display the sub-folders. Double-click on the "Data" folder to select it. Any databases in the "Data" folder will be displayed on the left. Select "SDRecNotes.mdb" and click the **OK** button. The user will be returned to the *ODBC Microsoft Access Setup* screen. Click the **OK** button on that screen to complete the creation of the data source.



Step 7 is now complete.

The workstation installation procedure is now complete. Click the shortcut created in step 6 on the workstation's desktop to view the selected screen.

Revision History

Rev.	Description	Date	MCO #
-	Initial Release	2/1/2008	N/A
A	Added Windows 7 warning to step 7	2/3/2012	2095